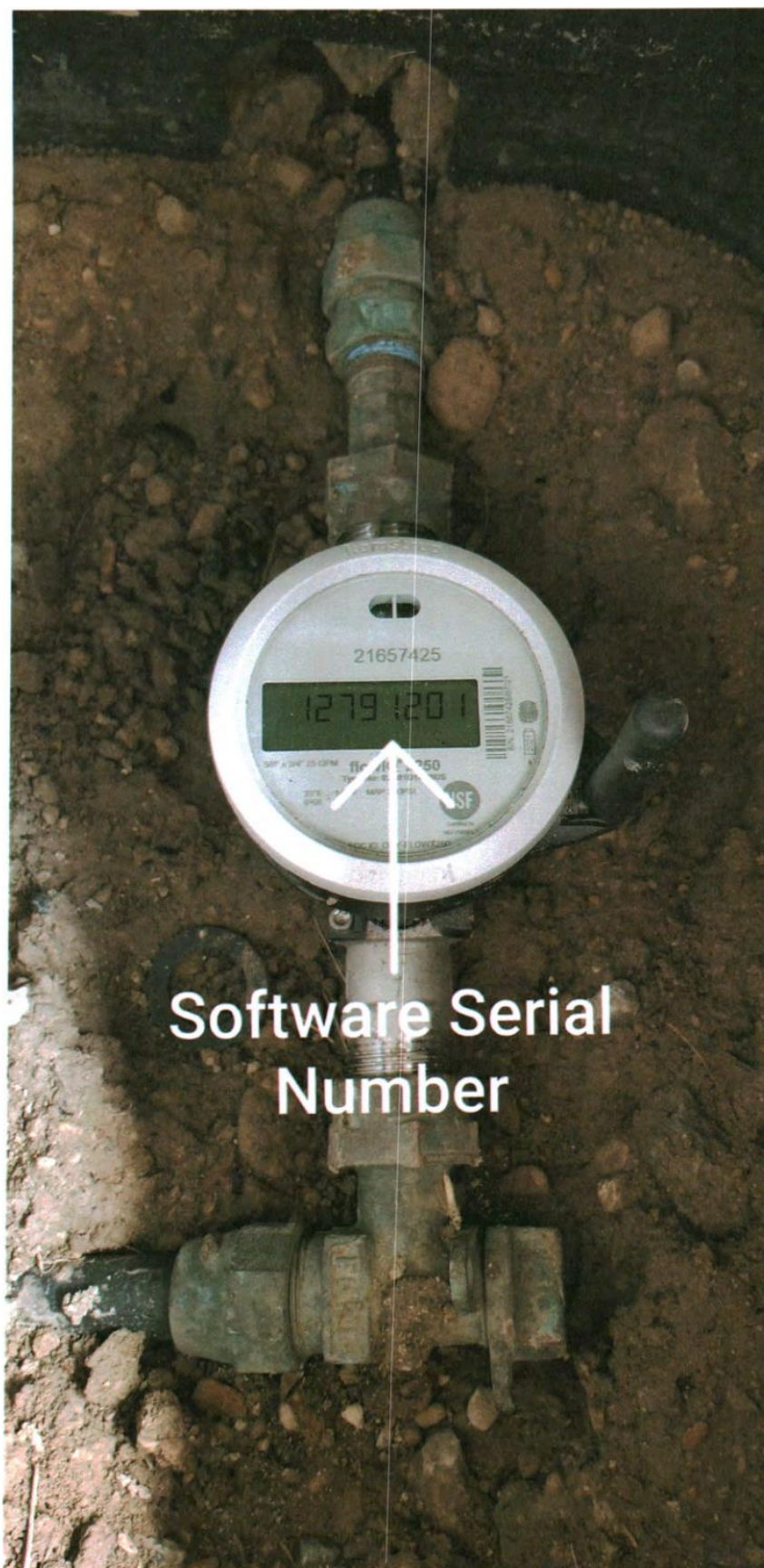


HOW TO READ YOUR WATER METER

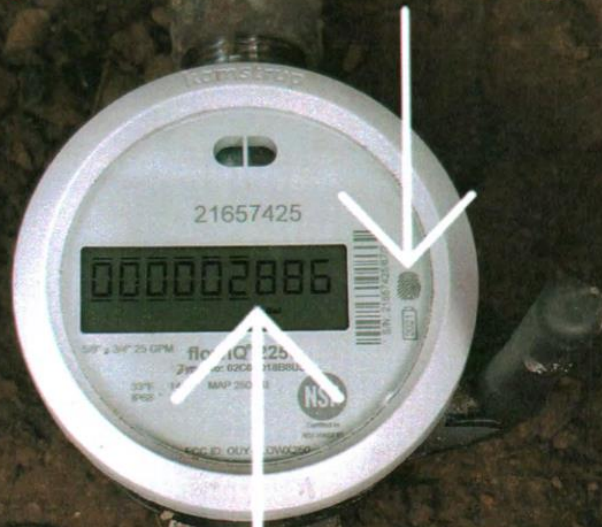
To help you understand how much water you use, you will need to know how to read your meter. Your water meter is located below ground usually between the sidewalk and the street. The lid should have the word WATER marked on it. You will need to remove the lid with a brass meter key (available for purchase at most local home improvement stores). On the face of the meter there is a display of numbers (you may need to use a paper towel to remove dust or mud in order to see the numbers). Touch the fingerprint symbol on the right side of the meter until the screen Gal is shown. Read the numbers from left to right and drop the last digit at the end. This is your meter reading. Subtract this reading from the “current” reading on your water bill. The difference is how many gallons of water used since the previous meter reading. If the reading is lower than the reading on your bill call the office to request a re-read on your meter. If the meter reading is considerably higher you need to check for a leak or adjust the timers on your irrigation system.

Touch the fingerprint symbol until the screen display GPM is shown; this is the gallons per minute usage. If you have turned off all the water in the home and on the property this should be zeros. You may need to watch this for several minutes to see if the numbers change, if they do change then you have a leak somewhere and need to investigate to determine the location.

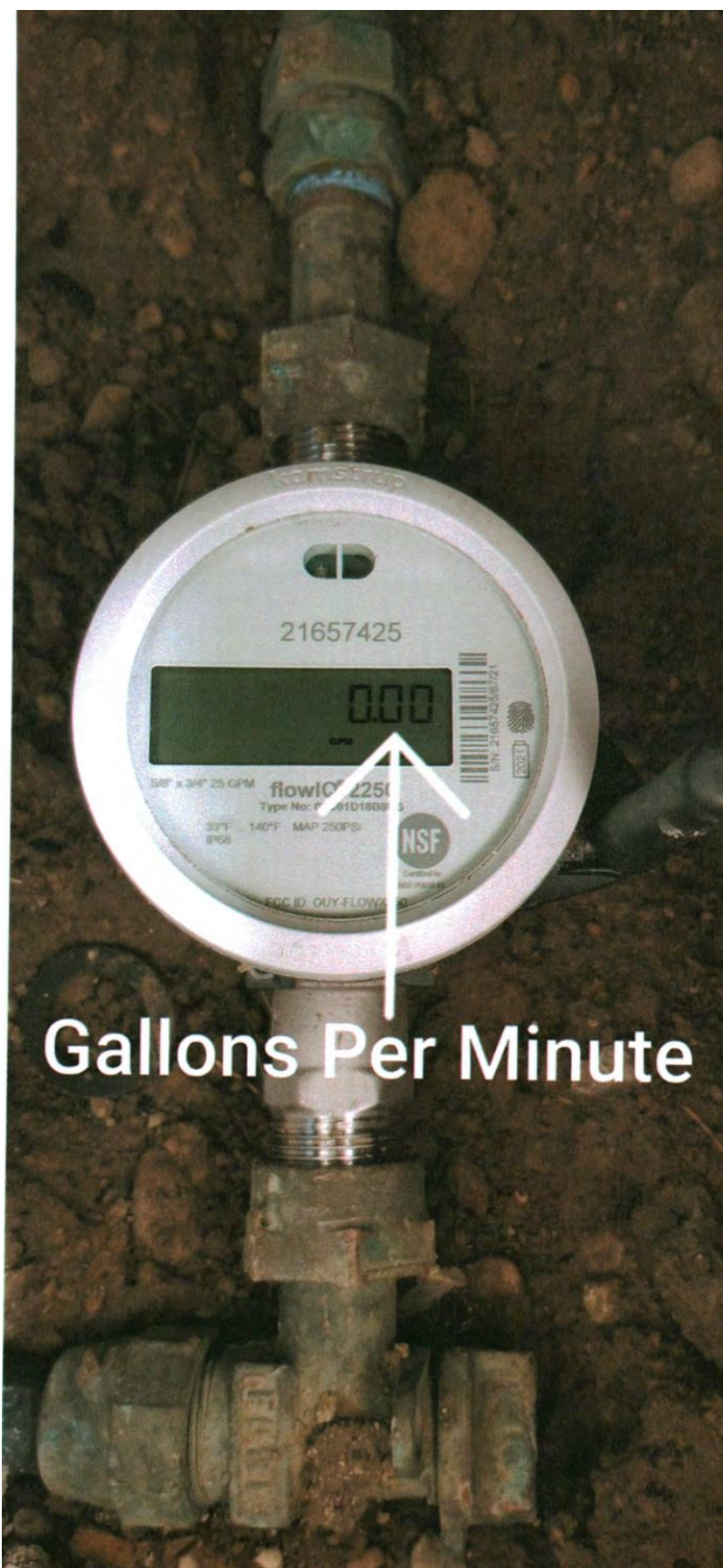


Software Serial
Number

Screen selector
(press with finger)

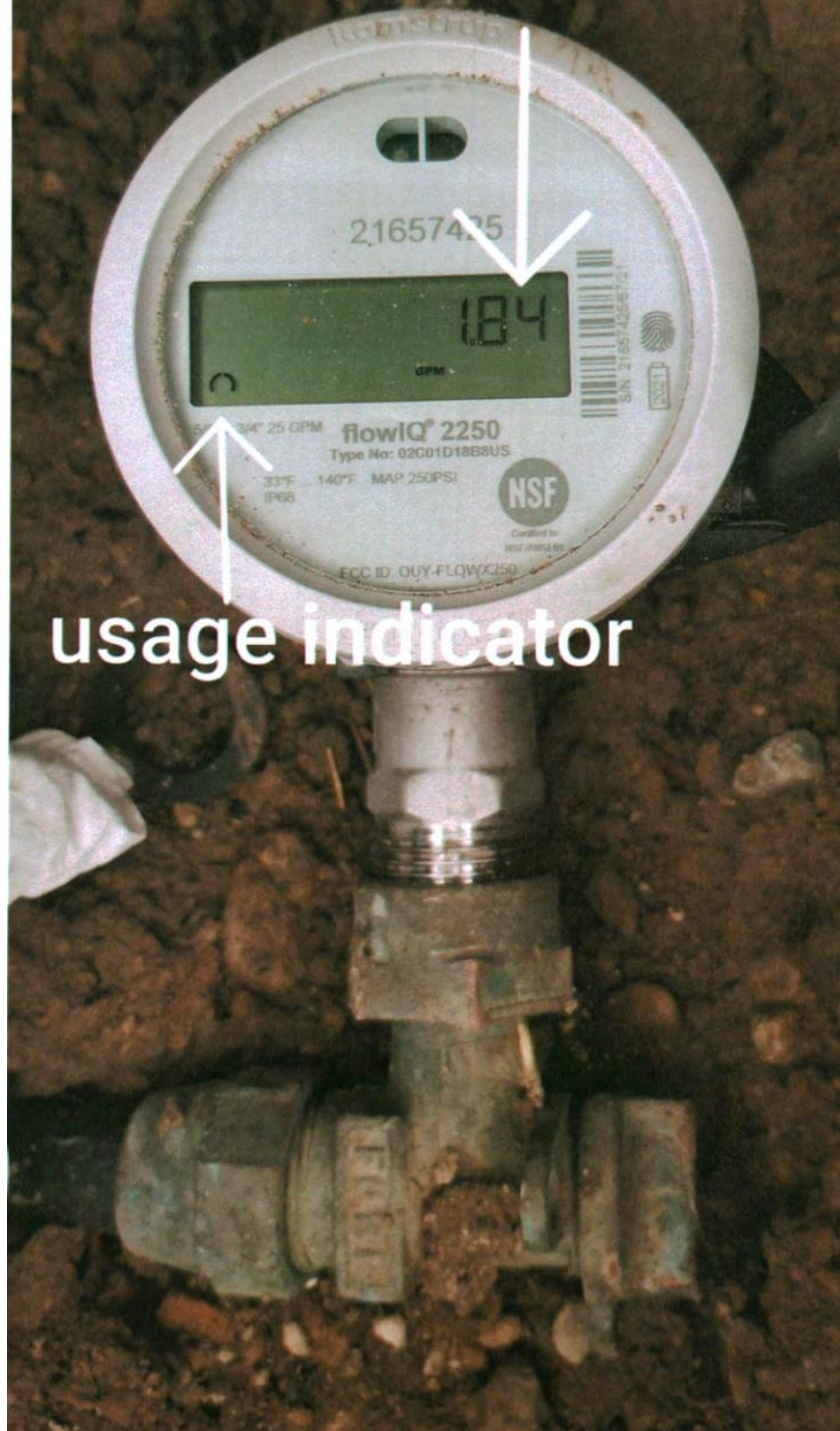


Meter Reading



Gallons Per Minute

Gallons per minute
with usage



usage indicator